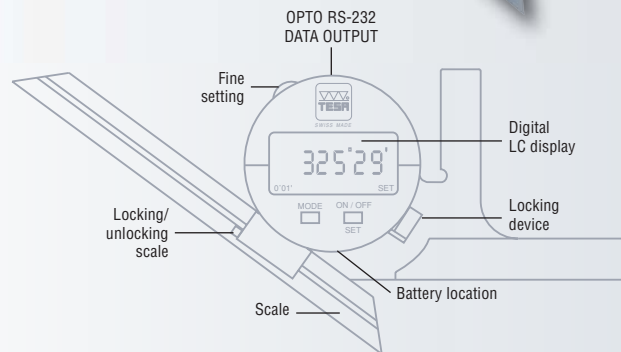


TESA Angle Protractor with Numerical Indication

- Decimal or sexagesimal large LC display
- 2 measuring directions
- Fine setting
- Locking device
- Scales - 200 300 or 500 mm



N^o



00630010

TESA angle protractor with numerical indication. Provided with a regular scale, 200 mm long.

Accessories

00660004 Scale, 200 mm

00660005 Scale, 300 mm

00660006 Scale, 500 mm

00660007 Extra base with one flat plus one prismatic measuring faces for small angles

00660008 Edge square for sharp angles

01961000 3V lithium battery, type CR 2032, 190 mAh

For ordering information on connecting cables etc., see section N.

00660007



00660008



LCD, 5 digits + sign



Measuring ranges: 1 x 360°, 2 x 180°, 4 x 90°



Digit height: 8,5 mm



Resolution: 0,01° or 1 minute of arc (0°01')



Preset to 0° or 180°



Max. perm. error: 4 minutes of arc



Max. perm. rotation speed: 1080°/s



IP51 (IEC 529)



+5 °C to + 40 °C



3V lithium battery, type CR 2032



Battery life > 3000 hours



RS 232, opto-coupled



Stainless steel body, hardened



410 g



Wooden case



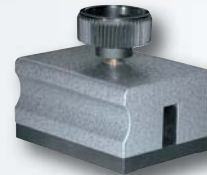
Serial number



Declaration of conformity

TESA EAC Angle Protractors with Dial

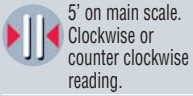
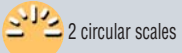
Circular scale with pointer – Easy, reliable readout of both the main and auxiliary scales – Very low hysteresis – Precision movement mechanism with compensation of play.



00610102



00610101



No.	Scale	Scale length mm
00630001	4 x 90°	200
00630002	4 x 90°	300

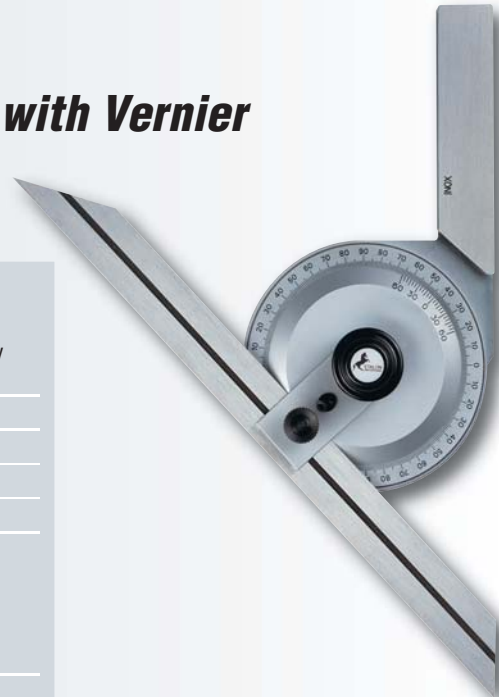
Optional accessories



No.	Scale	Scale length mm
00660002	Scale	200
00660003	Scale	300
00610101	Auxiliary scale for acute angles up to 15°	
00610102	Cast iron base with steel bottom surface, hardened	



ETALON 436 Angle Protractor with Vernier



No.	Scale	Scale length mm	Auxiliary scale
076115566	4 x 90°	200	–
076115567	4 x 90°	300	–
076116009	4 x 90°	200	●
076116010	4 x 90°	300	●

Optional Accessories (as shown above)



No.	Scale	Scale length mm
00660002	Scale	200
00660003	Scale	300
00610101	Auxiliary scale for acute angles up to 15°	
00610102	Cast iron base with steel bottom surface, hardened	
00610103	Magnifying glass	



Brown & Sharpe Angle Protractor Combination

Commonly used as bevelled protractor, ruler, scale, try square, depth and centre gauge as well as spirit level.



Nº

=

06719000 Brown & Sharpe Angle Protractor Combination

Consisting of:

- 1 Ruler graduated in millimetres, 300 mm long
- 1 Protractor head with 2 x 90° graduations
- 1 Centre head
- 1 Square head with hardened steel scriber



Hardened steel, wear protected measuring faces



Suited plastic case

Brown & Sharpe Sine Bar

Suited for setting ranges from 0 to 60° – Sine function for establishing the angle that needs to be set on the basis of the length dimensions obtained from parallel gauge blocks.



Nº



Centre distance
mm



mm

06769005

127 ± 0,004

123 x 25



Hardened steel



Removable front stop



Cardboard box



Declaration of conformity



Calculating a 45° setting angle (example)

Gauge block combination H

$$H = l \cdot \sin \alpha$$

$$H = 127 \cdot 0,70711$$

$$H = 89,803 \text{ mm}$$

