

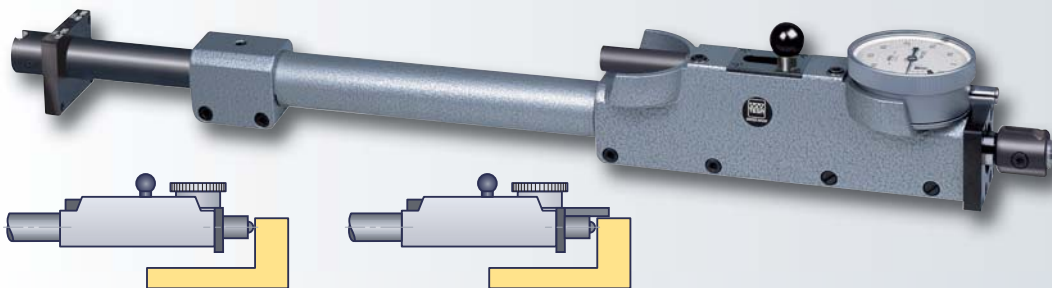
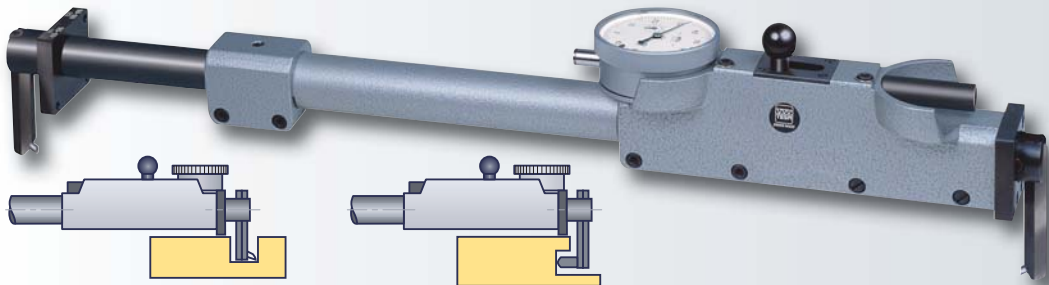
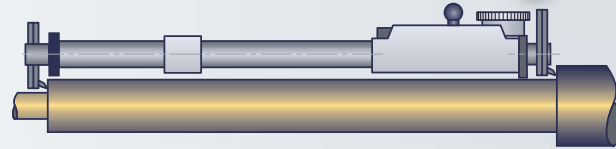
TESA INOTEST

Comparative Measuring Instrument

Allows large internal and external dimensions to be measured by comparison.

Consists of a measuring element with interchangeable inserts as well as a set of extensions. Since there is no material measure, the indication is set using a separate reference standard that can either be a gauge block, setting ring or horizontal measuring bench.

Measuring inserts for inspection in tool axis, or offset inserts – Vertical or horizontal position of use – Integrated dial gauge to show the culmination point – Constant measuring force – Extensions with heat insulating grip.



Measuring element

- Mobile ball-bearing anvil, 10 mm measuring travel
- Watertight dial gauges 01470104 and 01480100
- 0,01 mm or 0.0005 in
- 10 mm or 0.40 in
- Additional technical data, see section E
- 4 to 7 N. Reversible probing direction to allow both internal and external measuring

Measuring bolts

- Tungsten carbide tipped
- Measuring bolts supplied in pairs:
 - No. 01131901 for internal measuring in the instrument axis
 - No. 01131902 for internal/external measurement, measuring depth up to 30 mm from the lower edge of the tool

Extensions

- 25 mm dia. steel tube, 19 mm dia. telescopic tube that can be clamped.

Additional data

- Plastic case
- Dial gauge with serial number
- Dial gauge with inspection report
- Declaration of conformity





mm

TESA INOTEST complete set



in



mm



in

01111900

Internal dimen. 275 ÷ 1025
External dimen. 250 ÷ 1010

01121900

11 ÷ 41
10 ÷ 40

Consisting of:



mm



mm



in

01112301

Measuring element with dial gauge

01122301

01131901

Pair of measuring bolts for internal measuring

01131901

01131902

Pair of measuring bolts for internal/external measuring with length to 60

01131902

01132001

4 resting rods $\varnothing 7 \times 40$

01132001

00160101

3 insulating grips (order number for 1 item)

00160101

01112001

Extension internal dimensions 275 ÷ 335
external dimensions 250 ÷ 310

01122001

11 ÷ 13
10 ÷ 12

01112002

Extension internal dimensions 325 ÷ 435
external dimensions 300 ÷ 410

01122002

13 ÷ 17
12 ÷ 16

01112003

Extension internal dimensions 425 ÷ 635
external dimensions 400 ÷ 610

01122003

17 ÷ 25
16 ÷ 24

01112004

Extension internal dimensions 625 ÷ 1035
external dimensions 600 ÷ 1010

01122004

25 ÷ 41
24 ÷ 40

01162303

Plastic case for complete set

01162303

Optional Accessories

01141901

Extension for extending the application range by 500

01151901

20

01141902

Extension for extending the application range by 1000

01151902

40

01162001

Pair of tungsten carbide measuring bolts for internal/external dimensions $\varnothing 4 \times 7$

01162001

01162002

Pair of tungsten carbide measuring bolts for grooves $\varnothing 4 \times 7$

01162002

01161900

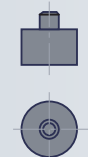
Measuring device for small
- internal dimensions 35 ÷ 280
- external dimensions 15 ÷ 255

01161900

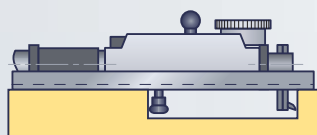
1.4 ÷ 11
0.6 ÷ 10



01162001



01131901



01161900

