

TESA UNITEST Internal Micrometer

Measures internal dimensions in the micrometer's axis with 2-point contact with the workpiece to be checked – Optional accessories are available for inspecting centring shoulders and blind bores as well as auxiliary means for external measuring.

Extensions with built-in gauge rods can be mounted on the measuring element, thus allowing any dimension within the application range to be measured, directly.

Precise, easy-to-handle micrometer – Horizontal or vertical position of use – Constant measuring force – Integrated dial gauge to show you the culmination point.



DIN 863 T4 (Style B)

Measuring element

Micrometer and dial gauge to 0,01 mm

Micrometer: 0,1 mm

Micrometer: 25 mm

0,5 mm

Dial gauge: ± 0,22 mm

0,7 to 1 N

8 µm

Measuring bolts

Spherical end for measuring in the micrometer axis. All inserts are interchangeable.

Tungsten carbide tipped

Extensions

26 mm dia. steel tube with snap-ring system. Also with built-in gauge rods.

Tungsten carbide tipped

One spherical and one flat measuring faces

Additional data

Wooden case

Setting standard with identification number

Declaration of conformity



mm

TESA UNITEST complete set



01110700



mm

Intern. dimen. 200 ÷ 1400



in



01120700 8 ÷ 56

Consisting of:



mm



mm



µm



in

01110901	Measuring element for inter. dimen. 200 ÷ 225			01120901	8 ÷ 9
01141001	Setting standard for internal/external dimensions	200		01151001	8
01110801	Extension	25	0,7	01120801	1
01110802	Extension	50	1	01120802	2
01110804	Extension	100	1,5	01120804	4
01110808	Extension	200	2,5	01120808	8
01110812	Extension	300	3,5	01120812	12
01110820	Extension	500	5,5	01120820	20
01160901	Special screwdriver			01160901	
01162302	Wooden case for complete set			01162302	

Optional Accessories

01141101	Extension	1000	10	01151101	40
01160701	Pair of tungsten carbide tipped measuring bolts for blind bores			01160701	
01162301	Auxiliary elements for external measurement			01162301	
		Measuring depth: ≤ 10			
01140801	Suspension device, complete	Measuring depth: ≤ 100		01150801	

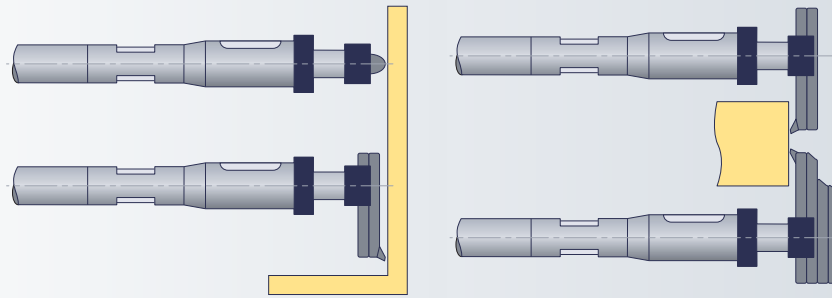


TESA UNIMASTER Universal Measuring Instrument

Provides the features necessary for direct measurement of specially large internal and external dimensions.

TESA UNIMASTER is similar to internal micrometers with two-point contact with the workpiece. Performs direct measurement of any dimension within the extended application range by simply adding the needed extensions with built-in gauge blocks to the measuring element.

Accurate, robust and easy-to-handle – Can be used either vertically or horizontally with a constant measuring force – Incorporates a lever-type dial test indicator that clearly shows the culmination point – Ensures stable measuring owing to both negligible deflection and thermal protection on each extension.



DIN 863 T4
(Style B)

Messelement



Micrometer and dial test indicator: 0,01 mm



Micrometer: 25 mm



1 mm



Dial test indicator: ± 0,4 mm



15 to 20 N. Mobile ball-bearing anvil under spring pressure.



Reversible probing direction to allow both internal and external measuring



5 µm

Measuring bolts



Tungsten carbide tipped



Measuring bolts supplied in pairs:

- No. 01110203 for internal measuring in the micrometer axis.
- No. 01110205 for internal/external measuring, meas. depth up to 60 mm from the lower edge of the micrometer.
- No. 01110208, extra-rigid for external measuring, meas. depth up to 75 mm from the lower edge of the micrometer

Extensions



38 mm dia. diameter steel tube with snap ring system. Built-in gauge rod.



Tungsten carbide tipped



One spherical and one flat measuring faces



mm

TESA UNIMASTER complete set



mm



in



in

01110000

Internal dim. 250 ÷ 1475*
External dim. 225 ÷ 1450*

01120000

10 ÷ 59*
9 ÷ 58*

Consisting of:



mm



mm



µm



in

01110300

Measuring element

internal dim. 250 ÷ 275
external dim. 225 ÷ 250

01120300

10 ÷ 11
9 ÷ 10

01110203

Pair of measuring bolts for internal measuring

01120203

01110205

Pair of measuring bolts for internal/external measuring, with length to

75

01120205

01110208

Pair of measuring bolts for extern. measuring, length 100

01120208

01110501

Setting standard

internal dimension 250
external dimension 225

01120501

10
9

01110101

Extension

25

0,7

01120101

1

01110102

Extension

50

1

01120102

2

01110103

Extension

75

1,2

01120103

3

01110104

Extension

100

1,5

01120104

4

01110105

Extension

125

1,5

01120105

5

01110106

Extension

150

2

01120106

6

01110112

Extension

300

3,5

01120112

12

01110118

Extension

450

4,5

01120118

18

01110124

Extension

600

6,5

01120124

24

01130001

Special screwdriver for extensions

01130001

01110401

Set of suspension accessories
(4 brackets together with 4 clamps)

01110401

01112401

Wooden case for complete set

01112401

Optional Accessories

01110140

Extension

1000

10

01120140

40

01162001

Pair of measuring bolts for internal/external dimensions and grooves
Measuring depth ≤ 20
Tungsten carbide inserts Ø 4 x 7

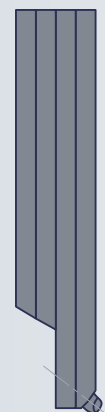
01162001

01160001

Support roller supplied individually (2 items are needed)

01160001

* Using 3 extensions at the very most



01110208



01110205



01110203



01162001

Additional Data

Wooden case

Measuring element and setting standard with identification number

Declaration of conformity



ETALON 532 Internal Micrometer

This internal micrometer is designed for measurements with 2-point contact. Extensions with built-in gauge rods to increase the measuring range – Stiff screw coupling.



Micrometer element



Extensions



Additional data



Complete sets



072109101 072109107 072109108 072109117 072109128



mm

50 ÷ 170 50 ÷ 290 50 ÷ 530 50 ÷ 1010 50 ÷ 1510

Consisting of:



mm



mm



µm

072103576	Micrometer element	50 ÷ 65	3	•	•	•	•	•
072103585	Extension	15	4,5	•	•	•	•	•
072105462	Extension	30	4,5	•	•	•	•	•
072109030	Extension	60	5	•	•	•	•	•
072103586	Extension	120	5	•	•	•	•	•
072109055	Extension	240	6	•	•	•	•	•
072109066	Extension	480	6,5	•	•	•	•	•
072109089	Extension	500	6,5	•	•	•	•	•

ROCH Periphery Tapes

Steel tapes with a dual graduation for measuring external circumferences and diameters of cylindrical parts on machines and other fittings – Suitable for malleable parts such as plastic tubing – Used for inspecting tanks or boilers – Also designed for checking steel or concrete pipes, rims, tires etc.



Diameter mm



Circumference mm

0951750222	20 ÷ 300	60 ÷ 950	0,15
0951750223	300 ÷ 700	940 ÷ 2200	0,20
0951750224	700 ÷ 1100	2190 ÷ 3460	0,20
0951750225	1100 ÷ 1500	3450 ÷ 4720	0,25
0951750226	1500 ÷ 1900	4710 ÷ 5980	0,30
0951750227	1900 ÷ 2300	5960 ÷ 7230	0,35