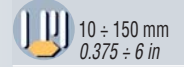
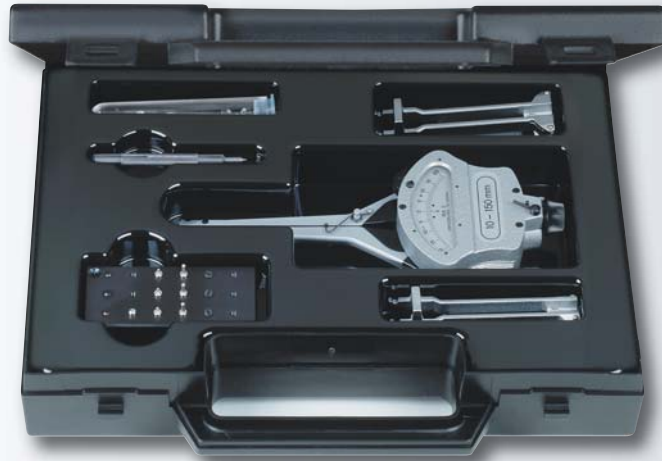


## INTERAPID IRA 2

The finest precision gauge for measuring by comparison – Performs two- or three-point measurement depending on the used accessory – Suitable for verifying through holes, blind bores, grooves, undercuts or slots with plan-parallel faces, among others.

- Wide application range from 10 up to 150 mm.
- Ideal in design, light in weight, easy to handle.
- Built-in indicator to 0,01 mm with fine setting.
- Centring arm for 2-point measurement.



**No**



**No**

mm

in

**079105704**

**INTERAPID IRA 2**

**079108640**

*Supplied with the following standard accessories:*

**079105667** 3 Steel inserts, hardened (order number for 1 item) **079105697**

**079105668** 3 Short steel inserts, hardened (order number for 1 item) **079105698**

**079105669** 3 Long steel inserts, hardened (order number for 1 item) **079105699**

**079112126** 2 Adjustable contact arms for bores  $\geq 6$  mm **079112126**

**079110111** 1 Small insert holder for 3-point measurement **079110113**

**079110110** 1 Large insert holder for 3-point measurement **079110112**

**079108502** 1 Centring arm for bores 15 ÷ 30 mm **079108504**

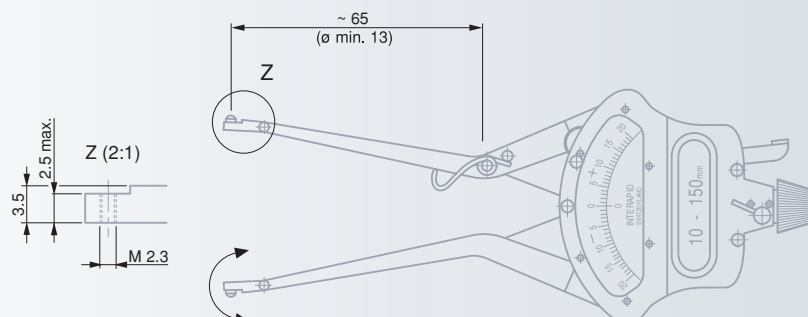
**079108503** 1 Centring arm for bores 30 ÷ 150 mm **079108505**

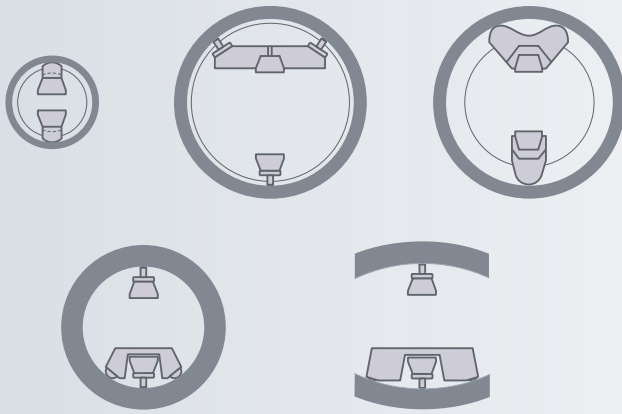
**079105694** 1 Screwdriver with special design **079105694**

**079111401** **INTERAPID IRA 2 md** **079111402**

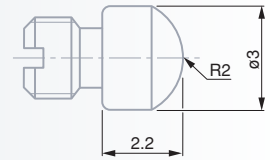
Same as INTERAPID IRA 2, but furnished with the measuring inserts listed below instead of those in steel with order No. 079105667 or 079105697.

**079105756** 3 Tungsten carbide inserts (order number for 1 item) **079105759**

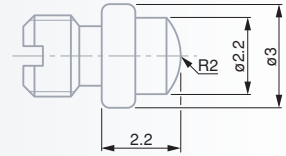




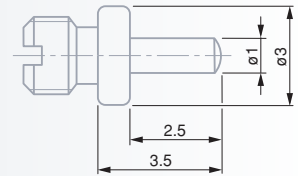
079105667



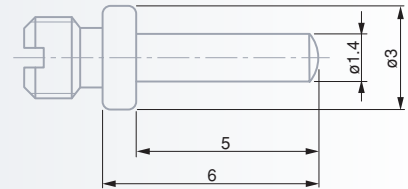
079105756



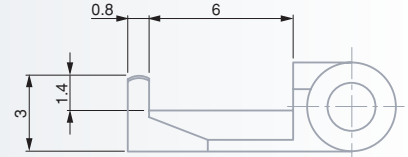
079105668



079105669



079112126



Chrome plated,  
hardened steel

## Optional Accessories

**Nº**

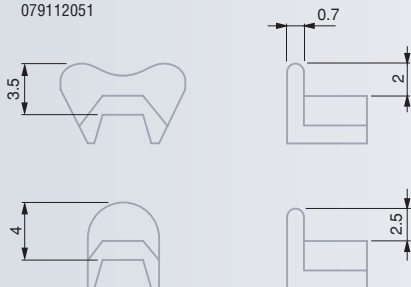
**=**

**079112051** Set = 2 small inserts (1-point contact)  
1 small insert (2-point contact)

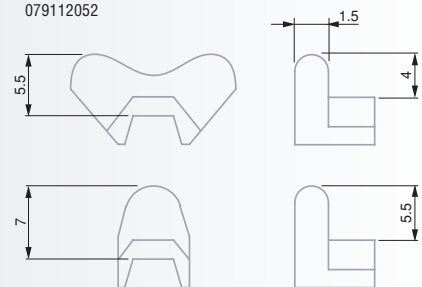
**079112052** Set = 2 large inserts (1-point contact)  
1 large insert (2-point contact)

**079108830** Handle

079112051



079112052



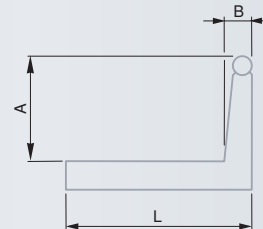
## ETALON Caliper Gauges

for Internal or External Dimensions –  
Reading to 0,01 or 0,02 mm

Long-lasting precision movement – No gear transmission – Tungsten carbide measuring faces for high wear-resistance – Concentric pointer for sure reading of the millimetres – Lifting lever for the gauge legs.

### External Short Leg Caliper Gauges

No	mm	mm	A mm	B mm	L mm
07919000	0 ÷ 10	0,01	9,3	3,0	39,7
07919002	10 ÷ 20	0,01	9,3	3,0	39,7
07919004	20 ÷ 30	0,01	9,3	3,0	39,7
07919006	30 ÷ 40	0,01	9,3	3,0	39,7
07919008	40 ÷ 50	0,01	9,3	3,0	39,7



### External Long Leg Caliper Gauges

No	mm	mm	A mm	B mm	L mm
07919009	0 ÷ 20	0,02	9,3	3,0	87
07919011	20 ÷ 40	0,02	9,3	3,0	87
07919013	40 ÷ 60	0,02	9,3	3,0	87



### Internal Short Leg Caliper Gauges

No	mm	mm	A mm	B mm	L mm
07919015	5 ÷ 15	0,01	1,1	1,5	39,7
07919016	10 ÷ 20	0,01	3,3	1,5	39,7
07919017	15 ÷ 25	0,01	4,0	1,8	39,7
07919018	20 ÷ 30	0,01	7,0	2,5	39,7
07919019	25 ÷ 35	0,01	9,0	2,8	39,7
07919020	30 ÷ 40	0,01	9,75	2,8	39,7
07919021	35 ÷ 45	0,01	9,75	2,8	39,7
07919022	40 ÷ 50	0,01	9,75	2,8	39,7



### Internal Long Leg Caliper Gauges

No	mm	mm	A mm	B mm	L mm
07919023	10 ÷ 30	0,02	3,3	1,8	87
07919024	20 ÷ 40	0,02	7,0	2,5	87
07919025	30 ÷ 50	0,02	9,75	2,8	87
07919026	40 ÷ 60	0,02	9,75	2,8	87

