



Angle standard made of fine-grained granite

Max. perm. error for squareness and straightness applies to the whole measuring range (carriage travel).

Valid for a theoretical line drawn symmetrically to the lateral guiding faces, at a distance of about 60 mm from the one in front of the angle standard.

ETALON RA only (without value sensor): 0,2 µm

Temperature stabilisation at < 0,1°C

Needed pressure: > 5 bar
Air consumption: < 20 l / min

Dimensions (L x W x H):
ETALON RA 300
200 x 80 x 484 mm
ETALON RA 500
250 x 80 x 634 mm
ETALON RA 700
250 x 80 x 884 mm

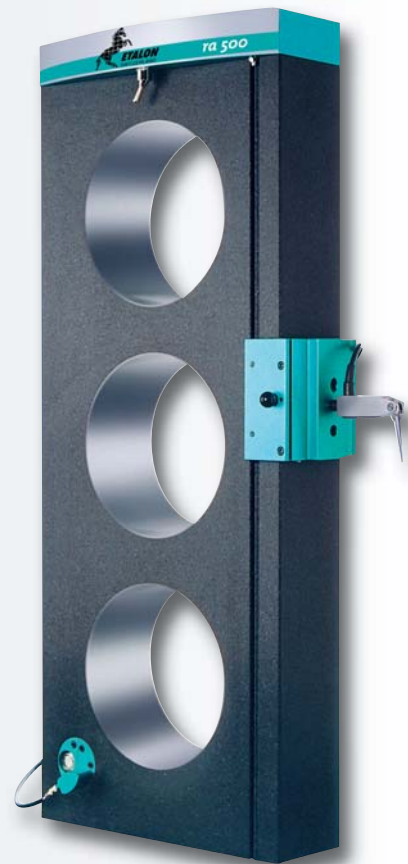
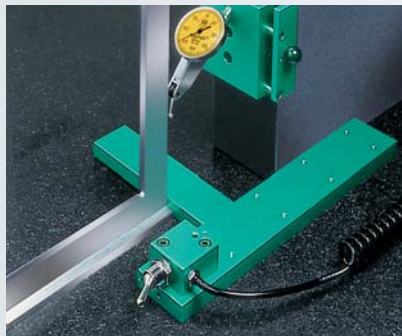
Suited carrying case

SCS calibration certificate

ETALON RA for Squareness Measurement

High-precision measuring instruments for determining squareness, straightness and parallelism errors – Perfect for use in the inspection laboratory as on the shop floor.

- Angle and straightness standards are made of natural granite with finely lapped measuring faces.
- Patented, hand moved carriage that attaches by vacuum on the guiding face of the angular standard. The grid potential thus obtained enables the carriage to be guided free of play.
- Base face on air bearing for easy displacement of the reference angle on the surface plate, practically without wear and tear.
- Helpful optional accessories to make measuring easy.



No	=	mm	Frontal µm	Lateral µm	µm	kg
05319200	ETALON RA 300	300	1	3	1	17
05319201	ETALON RA 500	500	1,2	5	1,2	26
05319202	ETALON RA 700	700	1,5	7	1,5	37

Optional Accessories

05360007	Auxiliary vacuum square for mounting either a flat or a try square at right angle on the ETALON RA front face.
05360008	Probe holder with a 8 mm dia. clamp for inspecting the angle lying inside a flat or a try square and the like.
05360009	Air filter unit (oil and water collector)
05360010	Wooden case for tool storage ETALON RA 300
05360011	Wooden case for tool storage ETALON RA 500
05360012	Wooden case for tool storage ETALON RA 700