

TESA Universal Probes I-DIM

These probes provide all End-users with the needed versatility for many measuring applications due to their metrological properties.

- Short probe body.
- Adjustable measuring force by moving the electrical zero. Enables parts made from materials of any type to be securely measured, with no distortion.
- Several mounting possibilities.
- Wide choice of probe inserts.
- Possible retraction of the measuring bolt over the pneumatic jack (available as an option).



DIN 32876, Part 1

See in table

Usable in any position

3 tightening alternatives

Leaf spring guiding.

Various clamping possibilities for probe inserts.

2 m long cable.

DIN 45322 connector, 5-pin.

Steel probe insert, light alloy probe body

Moved mass 33 g

13 kHz (± 5%) drive frequency. Highest mechanical frequency 10 Hz.

0,15 µm/ °C

20 ± 0,5°C

5 to 60°C

80%

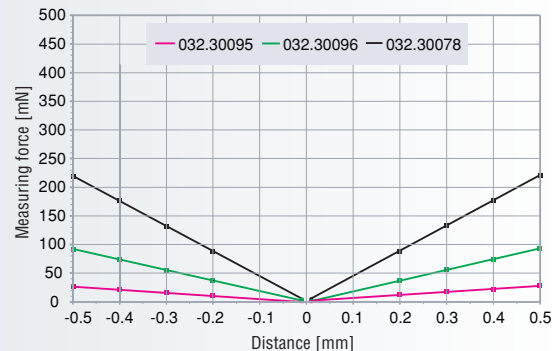
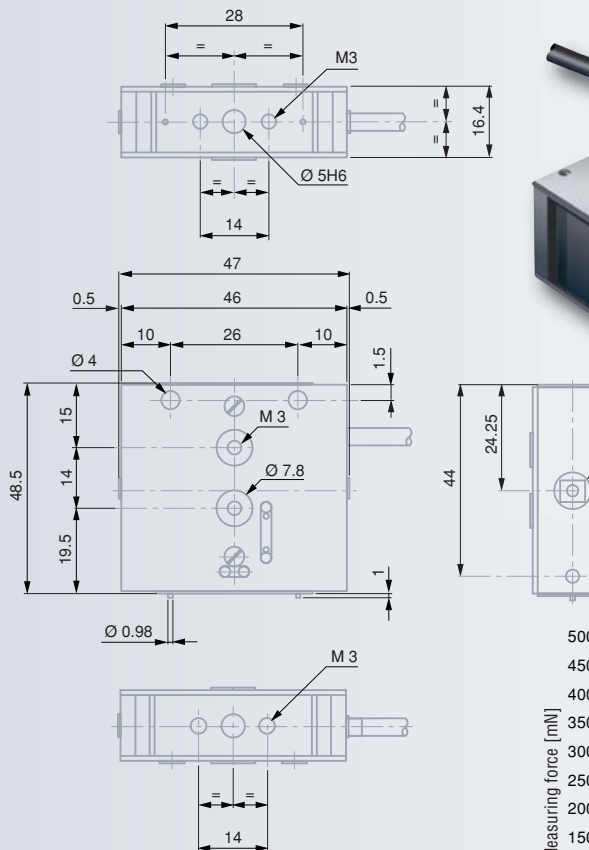
IP40 (IEC 60529)

Shipping packaging

Identification number

Declaration of conformity

No	Measuring range (mm)	N/mm	Measuring bolt retraction (accessory)
03230078	I-DIM ± 0,5	0,442	air pressure
03230095	I-DIM ± 0,5	0,055	air pressure
03230096	I-DIM ± 0,5	0,186	air pressure



	Electrical zero*, adjustable from... to	ex-factory	mm	µm	µm	µm**	Technical data sheet
I-DIM	-0,5 to 0,5	0	2	0,01	0,02	0,2 + 14 · L³	03200485

* Distance from the balanced point (F = 0).

** Linearity related max. permissible errors (L in mm).



Accessories for TESA I-DIM Probes



I-DIM probe with a pivot probe insert fitted with a ruby ball tip



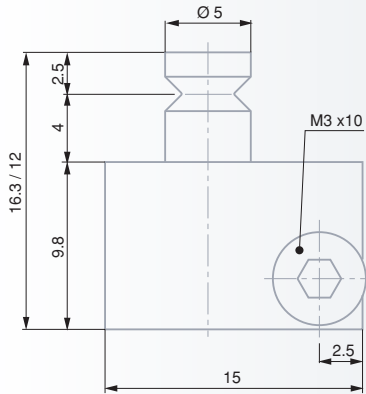
I-DIM probe with clamping shaft and probe insert in tungsten carbide



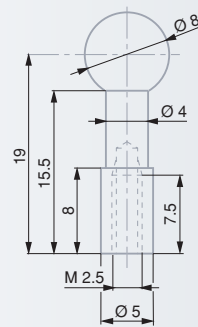
I-DIM probe with a M2,5 probe insert



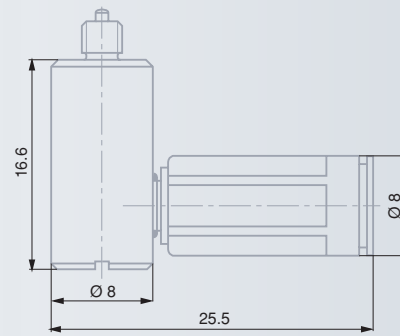
I-DIM probe with pneumatic jack



03260478



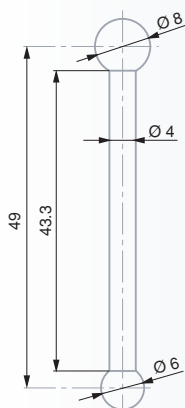
03260482



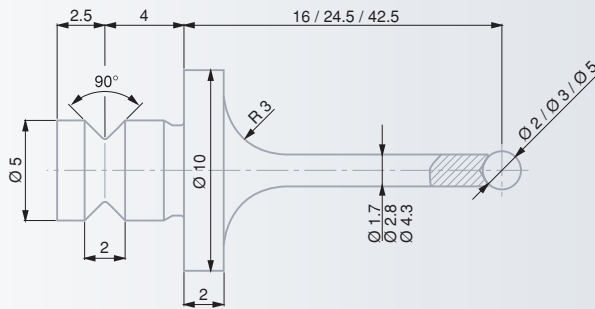
03260492



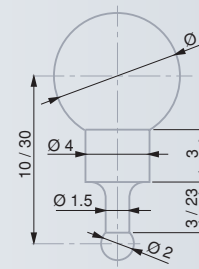
- 03260473** Clamping bracket
- 01840107** Clamping shaft, 8 mm diameter
- 03260478** Holder for pivot probe inserts
- 03260482** Pivot holder for probe inserts with a M2,5 coupling thread
- 03260492** Pneumatic jack for activating the moving part of the probe



03260481



03260475/76/77



03260479/80

Probe inserts



mm

mm

03260475	Probe insert	2	carbide	
03260476	Probe insert	3	carbide	
03260477	Probe insert	5	carbide	
03260479	Pivot probe insert	2	ruby	10
03260480	Pivot probe insert	2	ruby	30
03260481	Pivot probe insert	6	ruby	49