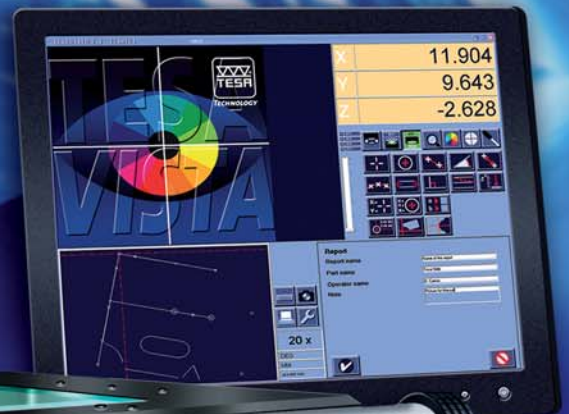


NEW
TESA VISIO 200
ACCURACY 2 μ m



V-200



TESA **VISIO²⁰⁰**
SWISS MADE

**TESA'S EXPERTISE APPLIED
TO MACHINE VISION**

- EXCEPTIONAL QUALITY/PRICE RATIO
- TELECENTRIC OBJECTIVES
- MANUAL ZOOM
- COAXIAL LIGHT
- SWISS MANUFACTURING



HEXAGON METROLOGY





TESAVISIO 200

ENTER THE WORLD OF VISION

The ambitious TESA's programme initiated two years ago with the development of a full range of machine vision for non-contact measurement has resulted in a growing demand for systems capable to measure forms and shapes or soft materials where mechanical probing is just impossible. To meet this demand, the latest hand-operated TESAVISIO 200 has been made smaller, but with no compromise on the metrological performances.

Equipped with TESAVISTA - the software that's easy to learn in less than one day - the machine is a perfect multi-tasking multi-user tool for workpiece inspection. Running pc•dmis Vision, this machine will allow you to easily measure parts as quickly as a flash.

EXCEPTIONAL QUALITY/PRICE RATIO

The machine has been specially designed to serve the dual purpose of controlling manufacturing costs as well as achieving the highest quality standard.

TELECENTRIC OBJECTIVES

In order to avoid undesirable perspective effects, various machine versions fitted with a 0,5x, 1x, 2x (basis version) or 4x fixed telecentric objective are available.

MANUAL ZOOM

The full range additionally includes a further version equipped with a manual zoom with 4 indexing positions from 1x up to 4x.

COAXIAL LIGHT

In addition to the standard episcopic and diascope light illuminations, a coaxial light is provided on some machines as part of their configuration.

SWISS PRECISION MECHANICS

Like any other machine vision from the whole range, TESAVISIO 200 is based on a sturdy Swiss precision mechanics with large-size socle and column made of granit as well as state-of-the-art components.



TECHNICAL DATA

- 6 machine versions, 2 software tools – TESAVISTA or pc•dmis
- Granit socle
- XY-coordinate table, high-precision Z-head
- CCD camera
- Telecentric objectives or indexable zoom
- Diascopic and episcopic illuminations through LEDs
- Counterbalanced Z-head inside the mechanical axis

SPECIFICATIONS

Measuring volume	200 x 100 x 150 mm
XY-Accuracy to MPE (E_1 X/Y)	2,0 μm + 10L/1000 (L in mm) **
XY-Accuracy to MPE (E_2 X/Y)	2,9 μm + 10L/1000 (L in mm) **
Z-Accuracy to MPE (E_1 Z) *	2,9 μm + 10L/1000 (L in mm) **
Incremental encoder resolution	0,05 μm
Max. load capacity	10 kg
Guidelines	2004 / 108 / CE
International standards	EN 61000-6-2, EN 61000-6-4, EN 61326-1

*mechanical accuracy

** m \leq 10Kg



WHEN YOU NEED TO BE SURE

TESA SA Switzerland
Bugnon 38 CH-1020 Renens
Tél. +41 (0)21 633 16 00
Fax +41 (0)21 633 75 35

tessa-ventech@hexagonmetrology.com

TESA FRANCE SAS
13-15, av. Georges de La Tour
F-54303 Lunéville Cedex
Tél. +33 (0)3 83 76 83 76
Fax +33 (0)3 83 74 13 16

tessa-france@hexagonmetrology.com

TESA Technology Deutschland GmbH
Netzstraße 32
D-71638 Ludwigsburg
Tél. +49 (0)7141 8747 0
Fax +49 (0)7141 8747 88

tessa-de@hexagonmetrology.com

TESA Technology UK Ltd.
Metrology House – Halesfield 13
GB Telford, Shropshire TF7 4PL
Tél. +44 1952 681 349
Fax +44 1952 681 391

tessa-uk@hexagonmetrology.com

TESA Technology ITALIA srl
Via Bizzozzero, 118
IT-20032 Corno (MI)
Tél. +39 (0)2 663 053 69
Fax +39 (0)2 663 090 82

tessa-italia@hexagonmetrology.com

TESA Technology Ibérica
Av. de Vizcaya s/n – Apart. 202
ES-48260 Ermua
Tél. +34 943 170 340
Fax +34 943 172 092

tessa-iberica@hexagonmetrology.com

TESA Benelux - Pascal Siebens
Generaal de Wittelaan 17 – Bus 21
BE-2800 Mechelen
Tél. +32 (0)15 435 301
Fax +32 (0)15 435 302

tessa-benelux@hexagonmetrology.com

Hexagon Metrology Nordic AB
Filargatan 3
SE-631 81 Eskilstuna
Tél. +46 16 160 800
Fax +46 16 160 890

order.se@hexagonmetrology.com

Headquarters: **TESA SA** • Bugnon 38 • CH-1020 Renens • Switzerland • Tél. +41 (0)21 633 16 00 • Fax +41 (0)21 633 75 35 • www.tesabs.ch - tessa-info@hexagonmetrology.com



HEXAGON METROLOGY

