

NEW
TESA-VISIO 200 GL
& 300 GL



**TESA'S TECHNICAL
EXPERTISE APPLIED TO
OPTICAL MACHINES**

- HIGHLY STABLE GRANITE STRUCTURE
- THOROUGH MECHANICAL CONCEPT
- MANUAL OR MOTORISED MACHINE VERSION
- CCD COLOUR CAMERA
- LED LIGHT SOURCES
- MANUAL OR MOTORISED ZOOM
- EASY-TO-USE SOFTWARE TOOLS



HEXAGON METROLOGY

ISO 9001



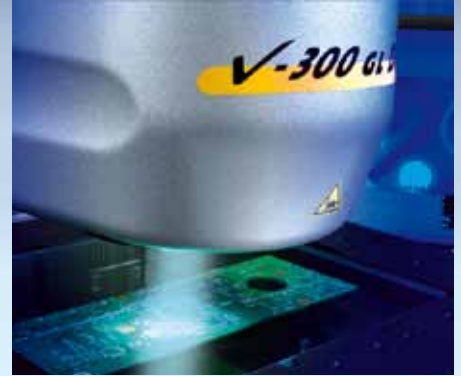


DEPENDABLE MECHANICAL CONSTRUCTION

Besides the machine basis and the column in granite, the measuring table precisely machined along with the optical system ensures optimum metrological conditions combined with high reliability and dependability.

VARIOUS LIGHT ILLUMINATIONS FOR PRECISE MEASUREMENT OPERATIONS

All TESA-VISIO are equipped with cold light sources integrating long-lasting, low-intensity LEDs. The ringlight includes a coaxial light allowing for a diascopic illumination of blind holes, for instance. In addition, the TESA-VISIO 300 GL provides users with a dual LED ringlight, enabling finer setting of the workpiece light illumination.



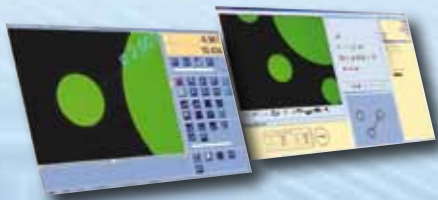
TESA-REFLEX VISTA

Specially developed for use on every TESA-VISIO machine version, this software assists the operator throughout the measurement process of geometrical part features. Using the **Compar** option, the part can be visually checked against its related CAO model.

TESA-REFLEX VISION

Specifically made for the TESA-VISIO 300 GL DCC, this software version provides a user-friendly interface for programming inspection operations.

TESA-REFLEX Vision also includes functions for automatic measurement of geometrical features and guides the user throughout the measurements. This makes this motorised machine version remarkably powerful, yet learned and used in a few hours of initiation.



TECHNICAL DATA

	06830401	06830428	06830601	06830634
TESA-VISIO 200 GL	•	•		
TESA-VISIO 300 GL			•	•
Measuring volume (X/Y/Z in mm)	200x100x150	200x100x150	300x200x150	300x200x150
Movements	manual	manual	manual	motorised
TESA-REFLEX Vista software	•	•	•	
TESA-REFLEX Vision software				•
Precision (m ≤ 5 kg)				
MPE _{xy} (E _x , E _y) (µm) (L in mm)	2 + 10L/1000	2 + 10L/1000	2 + 4L/1000	1,6 + 4L/1000
MPE _{xy} (E _{xy}) (µm) (L in mm)	2,9 + 10L/1000	2,9 + 10L/1000	2,5 + 4L/1000	2 + 4L/1000
MPE _z (E _z) (µm) (L in mm) *	2,9 + 10L/1000	2,9 + 10L/1000	2,9 + 5L/1000	2,9 + 5L/1000
Camera and light illuminations				
CCD colour camera	•	•	•	•
Manual Zoom, indexable, 6,5x	•			
Motorised zoom, 6,5x		•	•	•
Motorised zoom, 12x			Optional	Optional
Diascopic illumination, green	•	•	•	•
Parallel diascopic illumination	Optional	Optional	Optional	Optional
Coaxial light	•	•	•	•
Segmented white ringlight (4 x 90°)	•	•		
Segmented white ringlight (4 x 90° + 8 x 45°)			•	•
Laser pointer	•	•	•	•

* Mechanical precision

WHEN YOU NEED TO BE SURE



TESA SA Switzerland
Bugnon 38
CH-1020 Renens
Vente Suisse
Tél. +41 (0)21 633 16 00
Fax +41 (0)21 633 17 57
tesa-ventech@hexagonmetrology.com

TESA FRANCE SAS
13-15, av. Georges de La Tour
F-54303 Lunéville Cedex
Tél. +33 (0)3 83 76 83 76
Fax +33 (0)3 83 74 13 16
tesa-france@hexagonmetrology.com

TESA Technology Deutschland GmbH
Netzstraße 32
D-71638 Ludwigsburg
Tél. +49 (0)7141 8747 0
Fax +49 (0)7141 8747 88
tesa-de@hexagonmetrology.com

TESA Technology UK Ltd.
Metrology House
Halesfield 13
GB-Telford, Shrops. TF7 4PL
Tél. +44 1952 681 349
Fax +44 1952 681 391
tesa-uk@hexagonmetrology.com

TESA Technology ITALIA s.r.l.
Via Bizzozzero, 118
IT-20032 Cormano (MI)
Tél. +39 02 663 053 69
Fax +39 02 663 090 82
tesa-italia@hexagonmetrology.com

TESA Technology Ibérica
Av. de Vizcaya s/n
Apart. 202
ES-48260 Ermua
Tél. +34 943 170 340
Fax +34 943 172 032
tesa-iberica@hexagonmetrology.com

TESA Benelux
Pascal Siebens
Van Elderenlaan 1
NL-5581 WJ Waalre
Tél. +31 (0)40 222 06 08
Fax +31 (0)40 222 17 16
tesa-benelux@hexagonmetrology.com

TECHNOLOGY

Headquarters: TESA SA – Bugnon 38 – CH-1020 Renens – Switzerland – Tel. +41(0)21 633 16 00 – Fax +41(0)21 633 75 35 – www.tesabs.ch – tesa-info@hexagonmetrology.com



HEXAGON METROLOGY

ISO 9001

