

TESA INDUCTIVE PROBES 3 CONNECTION MODES



Electronic Measuring Equipment

World's First at Control 2011

**TESA INNOVATE
IN THE WORLD OF
INDUCTIVE PROBES**

- EFFICIENCY
- FLEXIBILITY
- SECURITY



**WIRELESS PROBE
FREEDOM OF MOVEMENT**



**HALF-BRIDGE PROBE
NEW PROBE INTERFACE**



**USB PROBE
DIRECT CONNECTION TO PC**

ISO 9001

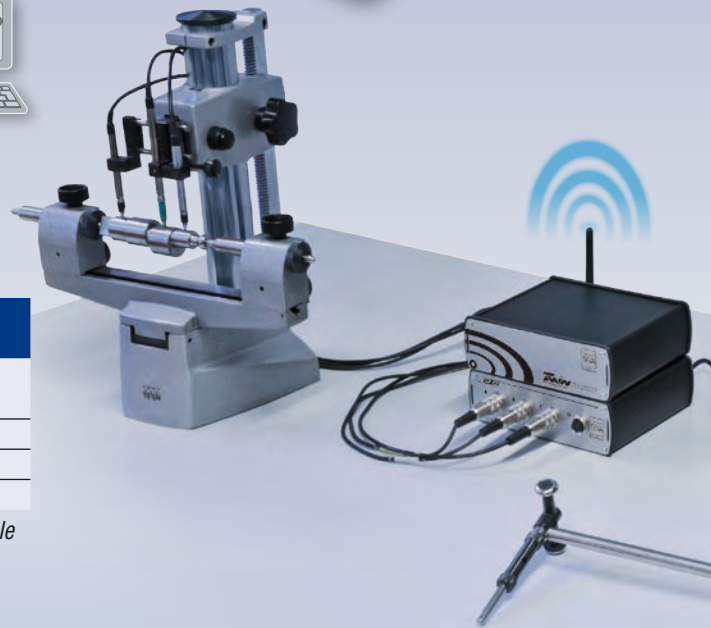
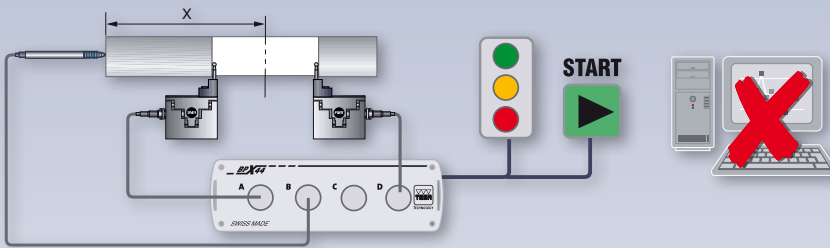
BPX44 PROBE INTERFACE

Electronic probe interface of the latest generation for conventional or linearized half-bridge probes

Designed for use in the most various environments, this unit combines flexibility and simplicity.

Independent

Once programmed on the PC, the unit will be used through both signal input and output, exclusively.



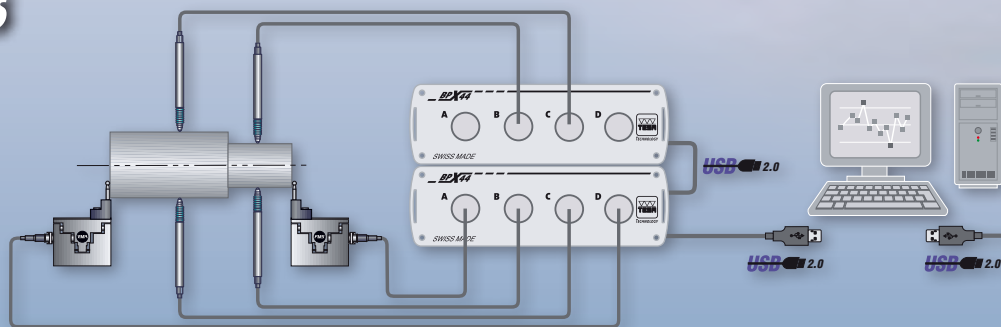
Order number	Designation	Signal input
05030010*	BPX44	4 TESA half-bridge probes 4 TESA linearized half-bridge probes
04761054	Power supply	100 to 240 Vac
04761055	EU mains cable	
04761056	US mains cable	

* BPX44 probe interface, instruction manual, CD (drivers and software) and USB cable (1,80 m) included in the delivery scope.

64 USB 2.0 SYNCHRONIZED PROBES

Flexible

Up to 64 probes can be connected as USB series, depending on users' needs. With classification of the measured values and TWIN compatible.



HALF-BRIDGE PROBES – LINEARIZED

The new digital correction integrated into the probe contributes to significantly reduce the linearity error (using BPX44).



TWIN PROBE ALONG WITH TWIN STATION

In an industrial world where data transmission has become imperative, this combination is the **FIRST-RATE SOLUTION** for a total freedom of movement associated with high precision, autonomy and robustness.

The wireless probe finds its place in any measuring device where the cable of the standard probe usually requires maintenance and leads to breakdowns. Of robust design and with a long battery life, this probe has been engineered to operate in the most hostile of ambient conditions.

The synchronization (<1 ms) of wireless probes or conventional probes into the BPX44 interface brings about flexibility and performance in dynamic measurement.

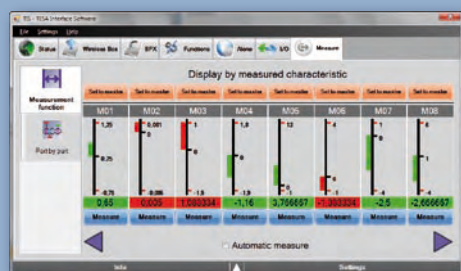
- WORLD'S FIRST**
- ROBUST**
- LONG AUTONOMY**
- SYNCHRONIZED**
- LINEARIZED**



Order number	Designation	Measuring range, mm	Measuring bolt retraction	Max. perm. error, μm	Repeatability, μm
03230500*	GTL21 W	± 2	manual	0,4 + 0,6 L	<0,1
03230501*	GTL212 W	$\pm 1,5$	air pressure	0,4 + 0,6 L	<0,1
03230502*	GT61 W	± 5	manual	0,8 + 0,6 L	<0,24
03230503*	GT612 W	± 5	air pressure	0,8 + 0,6 L	<0,24
04760069	Charger for W probe provided with EU or US connector				
05030012	TWIN Station (receiver 8 inputs) supplied with USB cable, 1,80 m				

* Resolution: 0,1 μm – Autonomy: up to 4 weeks – Distance (depending on surroundings): 20 m approximately.

TIS SOFTWARE



A skillfull use of new peripherals relies on a specific communication protocol whose application in a simple or customized way is possible on different ways:

- TIS software, complete as part of the delivery scope.
- Setting window for integration into a third-party software.
- Library of commands enabling a direct communication with each interfacing unit.

TIS main functions

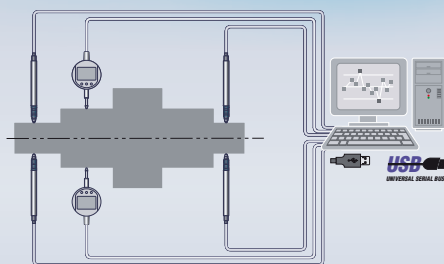
- Probe setting (standard and wireless models)
- Definition of used functions (static or dynamic measurement)
- Value displaying
- Exportation of data (csv/COM)



USB PROBES

- The answer for static measurements where a dial gauge accuracy is not enough.
- USB interface enabling a direct connection to PC.
- Higher compatibility, RS232 protocol. No settings required.
- Precision through the whole measuring range.

These probes can be directly connected to your host computer over the widely known USB interfaces. Since interface boxes or cards are no longer necessary, the use of a USB multiplexer provides Users with a flexible and affordable solution.



Order number	Designation	Measuring range, mm	Mechanical displacement, mm	Max. perm. error, μm^*	Repeatability, μm	Measuring bolt retraction
03230200	GTL 21 USB	± 2	4,3	0,4 + 0,6 L	<0,1	mechanical
03230201	GTL 22 USB	± 2	4,3	0,4 + 0,6 L	<0,1	mechanical
03230202	GTL 222 USB	$\pm 1,5$	3,1	0,4 + 0,6 L	<0,1	pneumatique
03230203	GTL 222-A USB	$\pm 1,5$	3,1	0,4 + 0,6 L	<0,1	pneumatique
03230204	GT 61 USB	± 5	10,3	0,8 + 0,6 L	<0,24	mechanical
03230205	GT 62 USB	± 5	10,3	0,8 + 0,6 L	<0,24	vacuum
03230206	GT 622 USB	± 5	10,3	0,8 + 0,6 L	<0,24	air pressure
03230207	GT 622-A USB	± 5	10,3	0,8 + 0,6 L	<0,24	air pressure
03230208	FMS 100 USB	± 2	5,8	0,4 + 0,6 L	<0,1	air pressure
03230209	FMS 102 USB	± 2	5,8	0,4 + 0,6 L	<0,1	air pressure

* For additional technical data, report to TESA's general catalogue.

Printed in Switzerland – Modification rights reserved – 3912.059.1104

TESA SA Switzerland

Bugnon 38
CH-1020 Renens
Vente Suisse
Tél. +41 (0)21 633 16 00
Fax +41 (0)21 633 17 57
tesa-ventech@hexagonmetrology.com

TESA FRANCE SAS

2 rue Antoine Lavoisier
Pôle Lavoisier – Bâtiment A
F-54300 Moncel-lès-Lunéville
Tél. +33 (0)3 83 76 83 76
Fax +33 (0)3 83 74 13 16
tesa-france@hexagonmetrology.com

TESA Technology

Deutschland GmbH
Netzstraße 32
D-71638 Ludwigsburg
Tel. +49 (0)7141 8747 0
Fax +49 (0)7141 8747 88
tesa-de@hexagonmetrology.com

TESA Technology UK Ltd.

Metrology House
Halesfield 13
Telford, Shrops. TF7 4PL
Tel. +44 1952 681 349
Fax +44 1952 681 391
tesa-uk@hexagonmetrology.com

TESA Technology ITALIA s.r.l.

Via Bizzozzero, 118
IT-20032 Cormano (MI)
Tel. +39 02 663 053 69
Fax +39 02 663 090 82
tesa-italia@hexagonmetrology.com

TESA Technology Ibérica

Av. de Vizcaya s/n
Apart. 202
ES-48260 Ermua
Tel. +34 943 170 340
Fax +34 943 172 092
tesa-iberica@hexagonmetrology.com

TESA Benelux

Pascal Siebens
Van Elderenlaan 1
NL-5581 WJ Waalre
Tel. +31 (0)40 222 06 08
Fax +31 (0)40 222 17 16
tesa-benelux@hexagonmetrology.com

TESA SA – Bugnon 38 – CH-1020 Renens – Switzerland – Tel. +41(0)21 633 16 00 – Fax +41(0)21 633 75 35 – www.tesabs.ch – tesa-info@hexagonmetrology.com

HEXAGON METROLOGY